

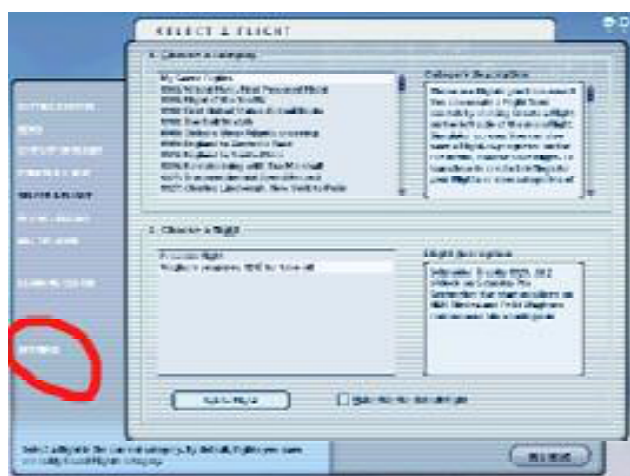
## Calshot 1929 scenery for the Virtual Schneider Project

The file Calshot29.exe in this Zip archive will install RAF Calshot seaplane base scenery into your Flight Simulator folders automatically. Simply unzip the file into a temporary folder and double-click to run the program. During the installation set-up process you will be prompted for the location of the Flight Simulator 9 folder on your system, by default it is set for the standard Microsoft installation route but this can be changed. Scenery files are installed into a new folder named Calshot29 in your Addon Scenery folder.

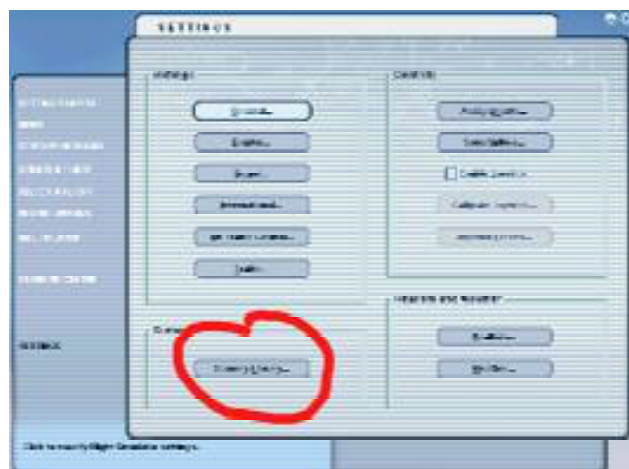
Please read the document files that are included in the installation, these give additional information regarding the VSP project and also the files you have just installed.

To activate the scenery in Flight Simulator please follow these steps.

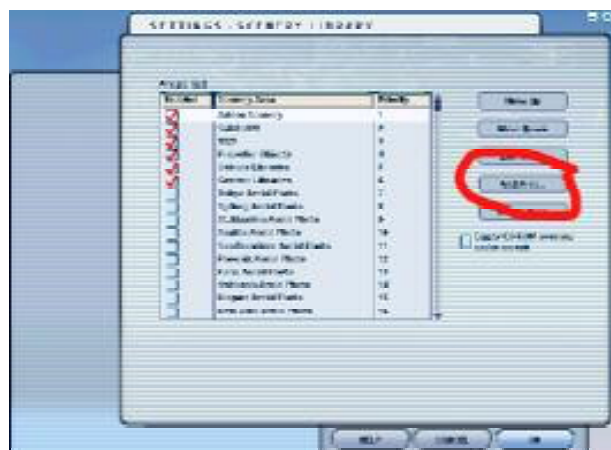
Load Flight Simulator



From the main menu select Settings



Then select Scenery Library



Select Add Scenery and browse to the folder..... Addon Scenery/Calshot29/Scenery. Click OK and return to the main menu. Close down Flight Simulator and reload, all the Calshot scenery will now be activated.

\*\*\*\*\*Please note that this scenery is not compatible with UK VFR photo-scenery\*\*\*\*\*

Ralph Pegram May 2004