

**ACS-GPS (version 1.61) ACCORDING TO MASKRIDER  
a.k.a. Chris Westervelt**

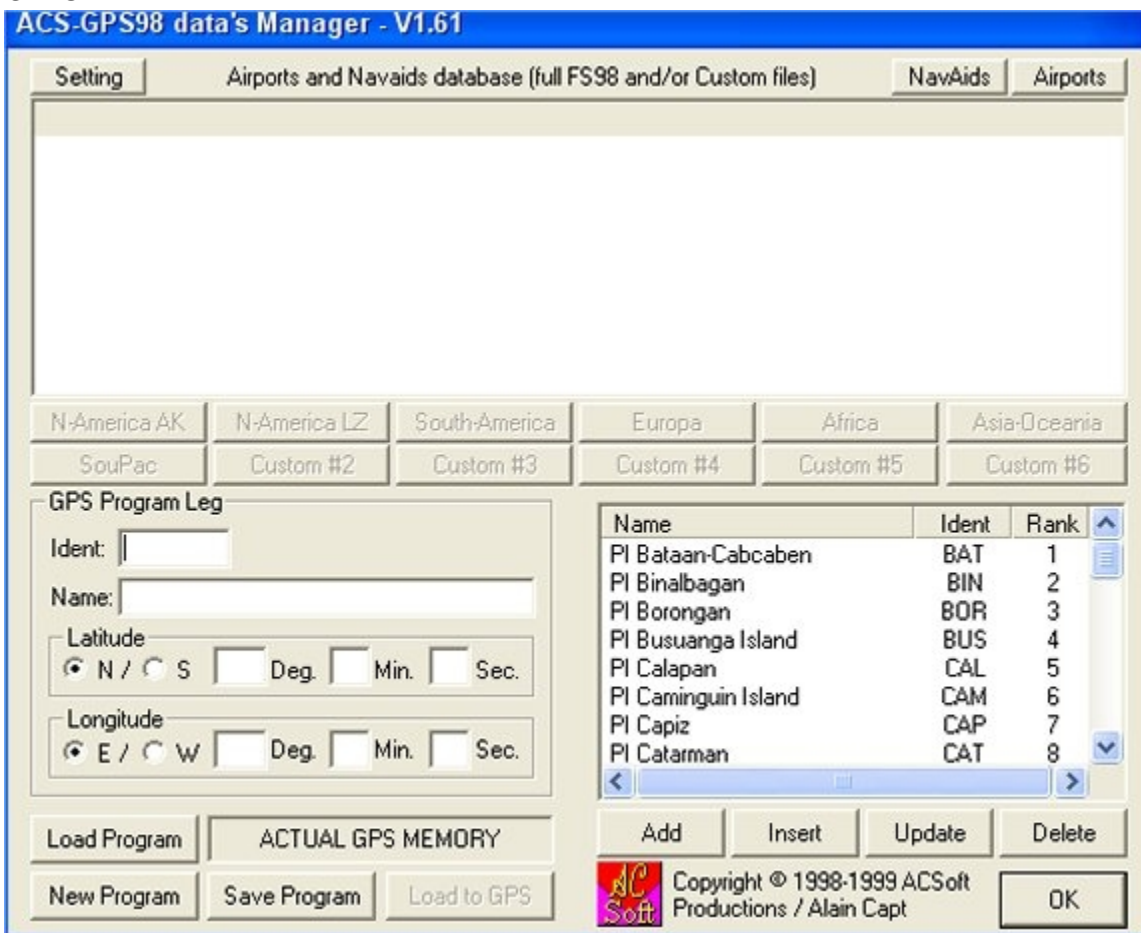
Some assumptions:

You already have ACS-GPS version 1.61 installed.

The ACS-GPS gauge, ACS.GPS98-KLN90B\_CRT.gau, looks like this:



The ACS-GPS Data Manager window looks like this:



The ACS-GPS Data Manager window can be opened in a stand alone mode by clicking on the ACS-GPS,exe icon. Or it can

be opened from within the game using a button found on the ACS-GPS gauge (the center button along the bottom).

Now, in my CFS2 set-up, most of my plane panels, stock and add-ons, are aliased to a custom panel containing a NAV-AP window, which contains the ACS.GPS98-KLN90B\_CRT.gau. This NAV-AP window can be called up *while flying* by clicking on an icon (gauge) added to the main 2D panel window (737-400!GPS Display Toggle) and/or clicking on F9 or F5. I am not sure just what determines when it will be F9 or F5, it just happens that way ;D.

Here is what the panel looks like in my Wildcat:



How does it all work? Lets focus in on the ACS.GPS98-KLN90B\_CRT.gau first. Here is a close up View:



When the NAV-AP window opens, the ACS-GPS gauge looks like this.

Now, I still don't know what everything is for. But here are the basics.

Clicking on the "GPS ON" button in the NE corner turns it on. Then, depending upon which flight program data is loaded, it ooks something like this:



Clicking on the "MODE" button changes the first line in the display from the location ID to the Location Name (it may do other stuff, too, but I don't know what).



Clicking on the "PRV-NXT" button moves you up and down in the GPS Program Leg list. In this case, clicking on the "NXT" side of the button moves us from Bataan-Cabcaben to



Binalbagan.



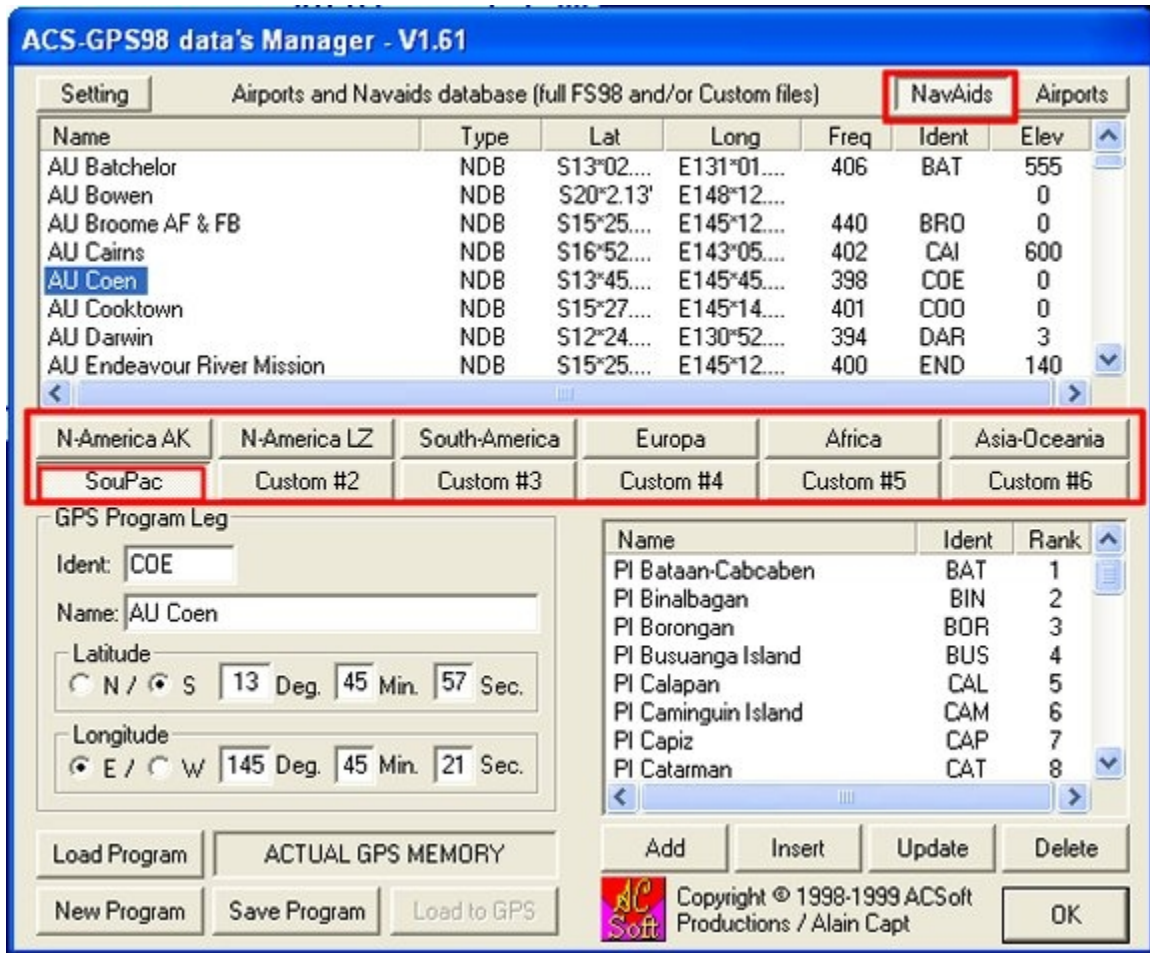
Once you get to your destination of choice you set it in as your destination by clicking the 'ENT' button in the SE corner. At which point the "ENT" button lights up, the Autopilot Heading Hold function is activated and the plane turns to the appropriate heading indicated on the gauge. In this case 199: This is what it looks like in the NAV-AP window:



If you leave everything in this configuration the plane will fly to this destination, Binalbagan, and then automatically on to the next destination Program Leg, and the next after that until you deactivate the flight program by clicking "ENT" again. If you wish to discontinue heading toward the destination shown in the display and fly somewhere else you may do so by deactivating the "ENT"

button and then using the "PRV-NXT" button to choose an alternate destination from the currently loaded GPS Program and then reactivate the "ENT" button.

If the alternate destination is not included as a leg in the currently loaded GSP Program, it can be added to it by clicking on the center button along the bottom of the ACS-GPS gauge and opening the ACS-GPS Data Manager window. When the ACS-GPS Data Manager window opens click on the NAVAIDS button in NE corner.



This will activate the two rows of buttons just above the GSP Program Leg portion of the window. Click on any button in the two rows you wish.

In this case we clicked on SOUPAC. This brings up a list of all stock and MaskRider CFS2 destinations. Double clicking on any line, in this case AU Coen, fills the GPS Program Leg boxes with the required data for that destination. At this point click either the "ADD" or "INSERT" button under

the right hand list window pane and the new program leg will be added to the currently loaded list of program legs.

If you click "ADD" it will be added at the end of the list. If you click "INSERT" it will be added above whatever entry you may have highlighted in the list.

Once you have either added or inserted a new program leg, the grayed-out "Load to GPS" button (Third button from the left, bottom row) will be activated. Click it and the new destination (program leg) will be added to the currently loaded GPS Program and choosable from the ACS-GPS gauge. Press OK and the ACS-GPS Data Manager window will close. You might also be asked to save the changes to the currently loaded program- at which point you may choose whether to do so or not.

I hope this helps some Cody. Feel free to get back with any questions and I'll try to answer them.