

AERODROME CHART-ICAO

17°23' 07" N
104°38' 31" E

ELEV 587 ft
179 m

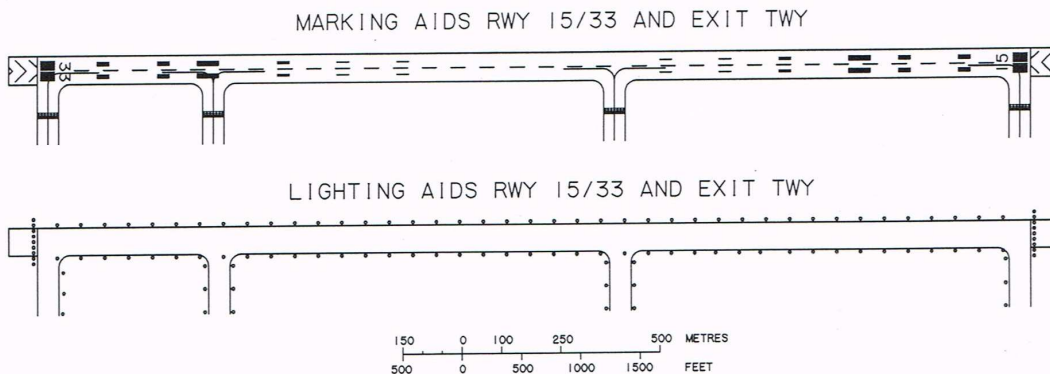
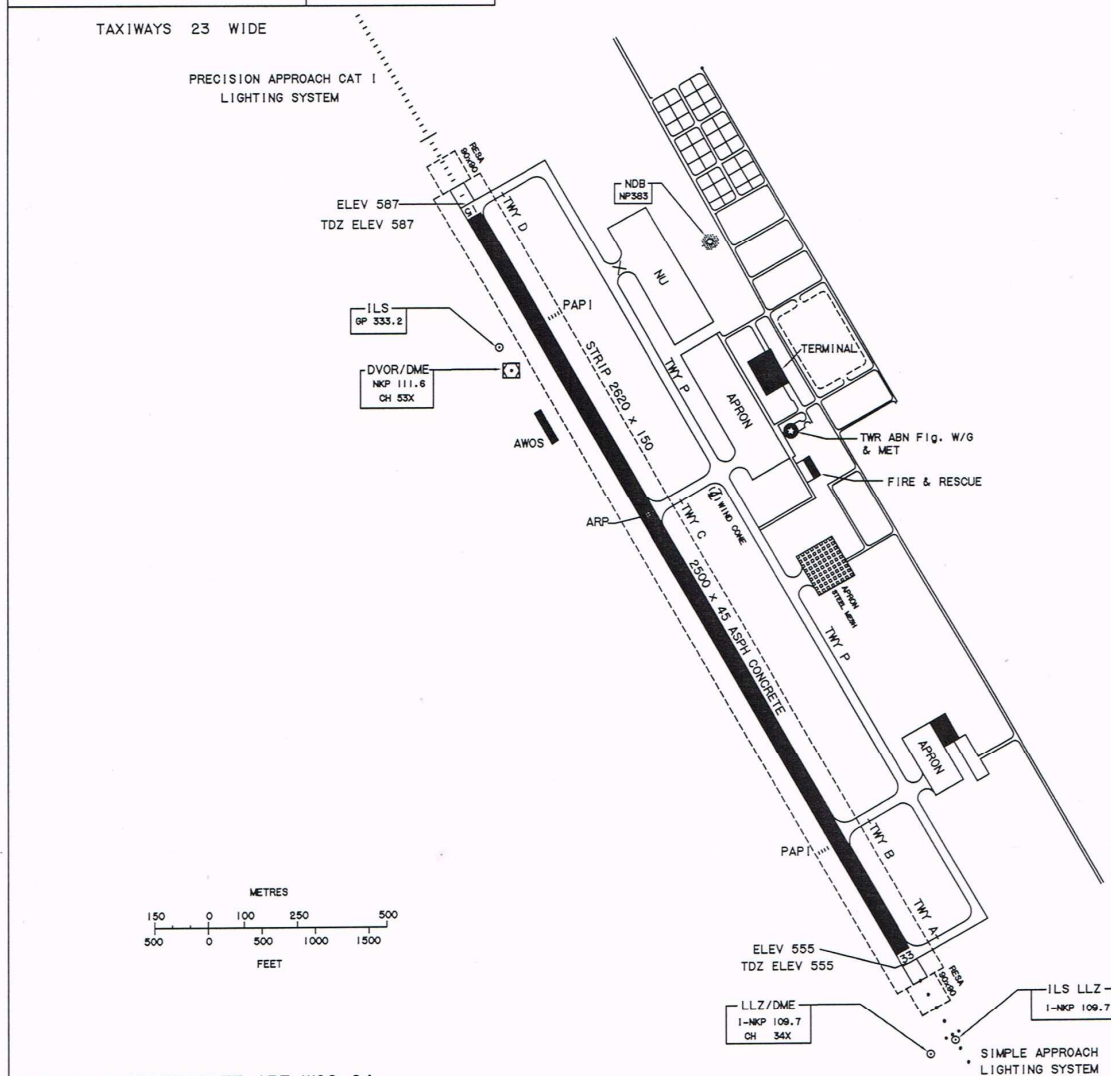
TWR 122.5
236.6

NAKHON PHANOM/Nakhon Phanom

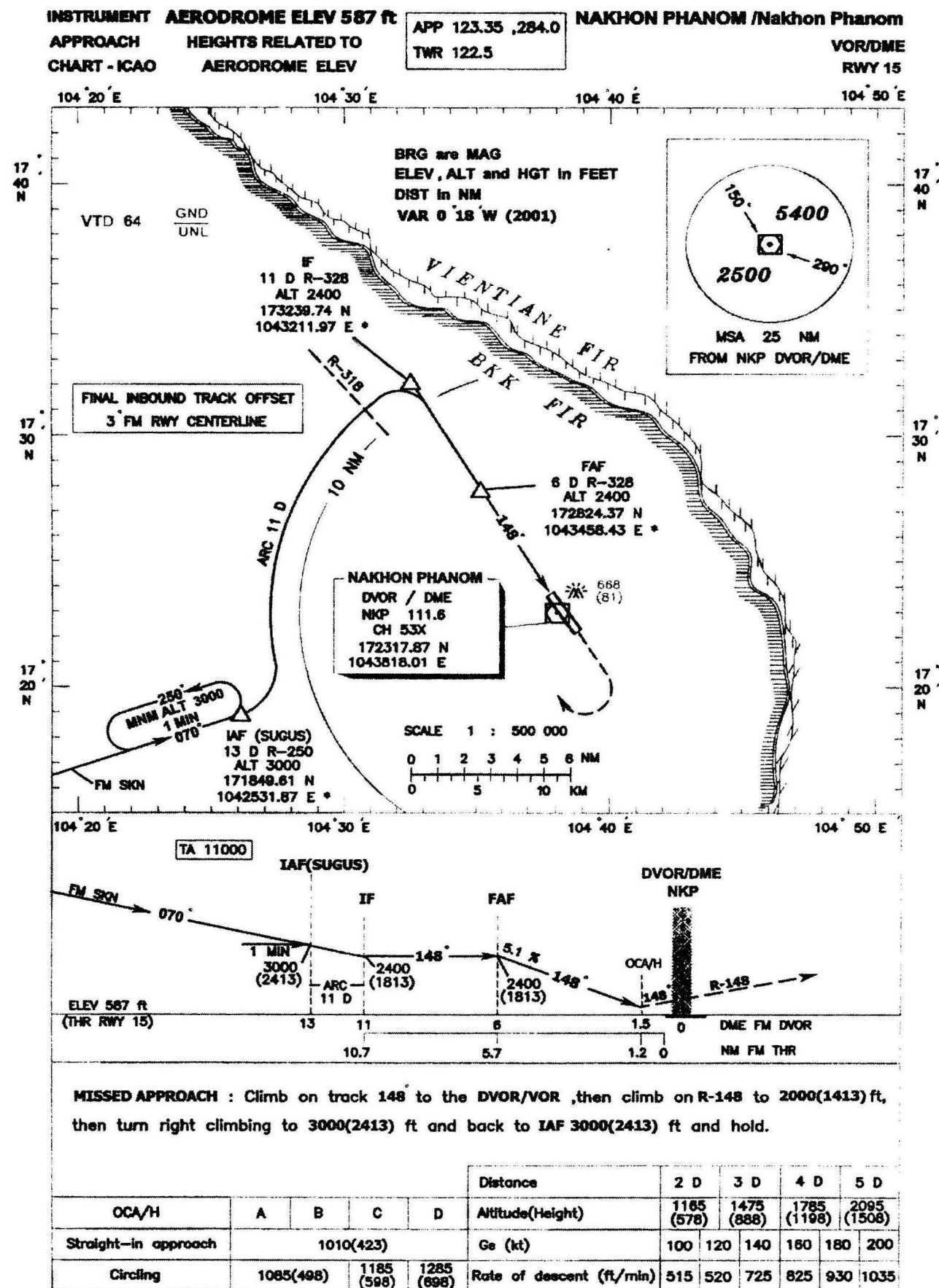
RWY	DIRECTION	THR	BEARING STRENGTH
15	145°	17°23' 35" N 104°38' 10" E	PCN 61/F/C/X/T
33	325°	17°22' 28" N 104°38' 59" E	runway and all taxiways
APRON			PCN 61/R/C/X/T

ELEVATIONS IN FEET AND DIMENSIONS IN METRES
BEARINGS ARE MAGNETIC

VAR 03 00
(2005)
ANNUAL RATE OF CHANGE 4°W



THIS PAGE INTENTIONALLY LEFT BLANK

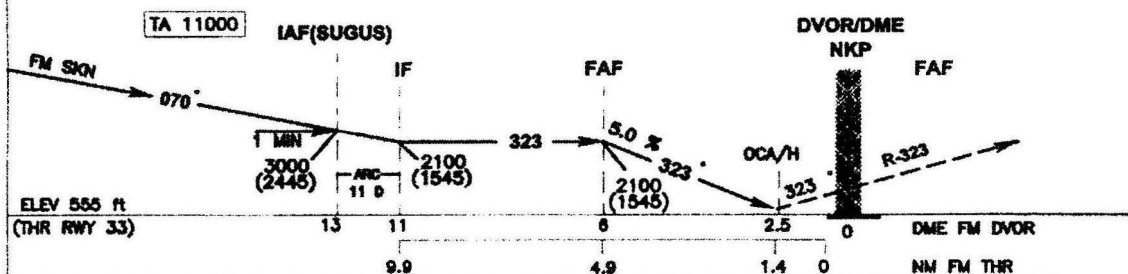
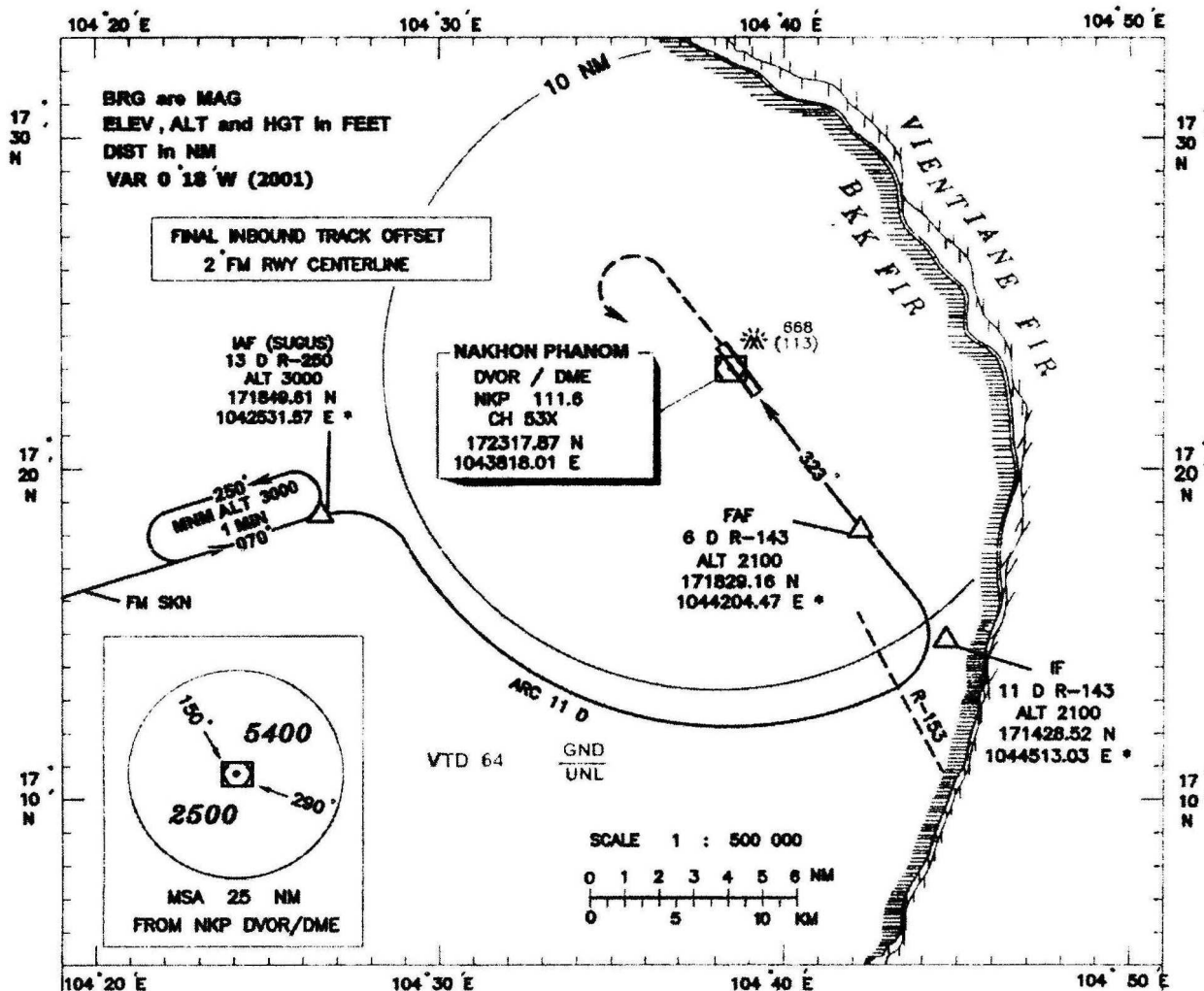


THIS PAGE INTENTIONALLY LEFT BLANK

INSTRUMENT AERODROME ELEV 587 ft
APPROACH HEIGHTS RELATED TO
CHART - ICAO THR RWY 33 ELEV 555 ft

APP 123.35 ,284.0
TWR 122.5

NAKHON PHANOM /Nakhon Phanom
VOR/DME
RWY 33

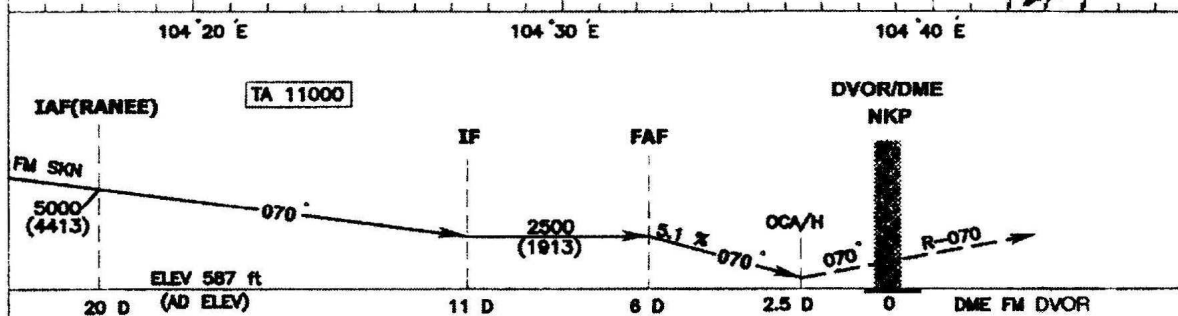
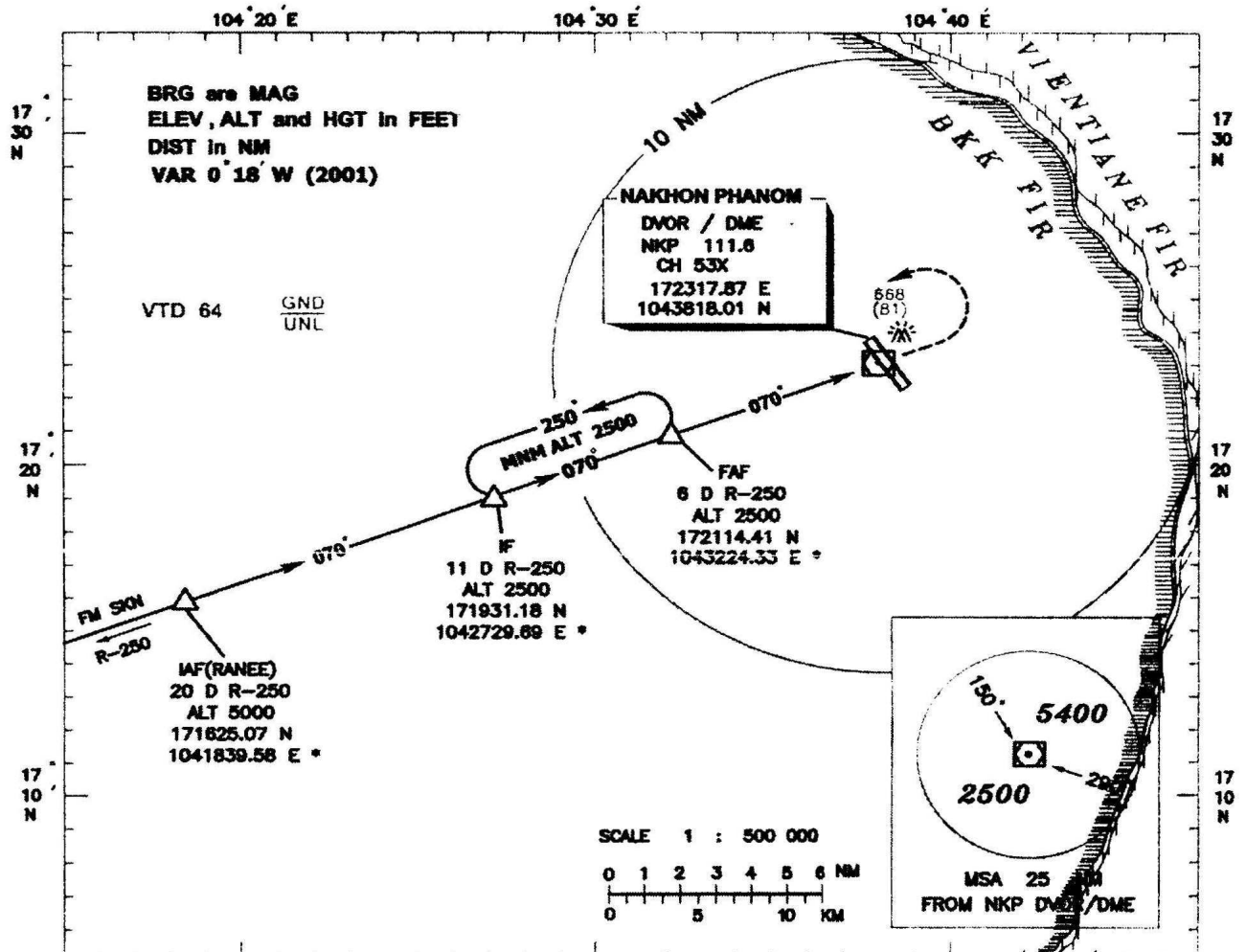


MISSED APPROACH: Climb on track 323° to the DVOR/DME, then climb on R-323 to 1500(946) ft, then turn left climbing to 3000(2445) ft and back to IAF 3000(2445) ft and hold.

					Distance	3 D		4 D		5 D	
OCA/H	A	B	C	D	Altitude(Height)	1200 (845)		1500 (945)		1800 (1245)	
Straight-in approach	1045(490)				Ge (kt)	100	120	140	160	180	200
Circling	1080(525)		1185 (630)	1285 (730)	Rate of descent (ft/min)	505	610	710	810	910	1010

THIS PAGE INTENTIONALLY LEFT BLANK

NAKHON PHANOM /Nakhon Phanom
VOR/DME
RWY 15/33



MISSED APPROACH : At 2.5 D ,climb straight ahead when over DVOR/DME climb on R-070 until reaching 1500(913) ft and turn left back to FAF 2500(1913) ft and hold.

					Distance	2 D	3 D	4 D	5 D
					Altitude(Height)	1255 (888)	1565 (978)	1875 (1288)	2185 (1598)
OCA/H	A	B	C	D	Ge (kt)	100	120	140	160
Straight-in approach		Not Authorized			Rate of descent (ft / min)	515	620	725	825
Circling		1085(498)	1185 (598)	1285 (698)	FAF-MAPT 3.5 NM (min : s)	2:06	1:46	1:30	1:19

THIS PAGE INTENTIONALLY LEFT BLANK

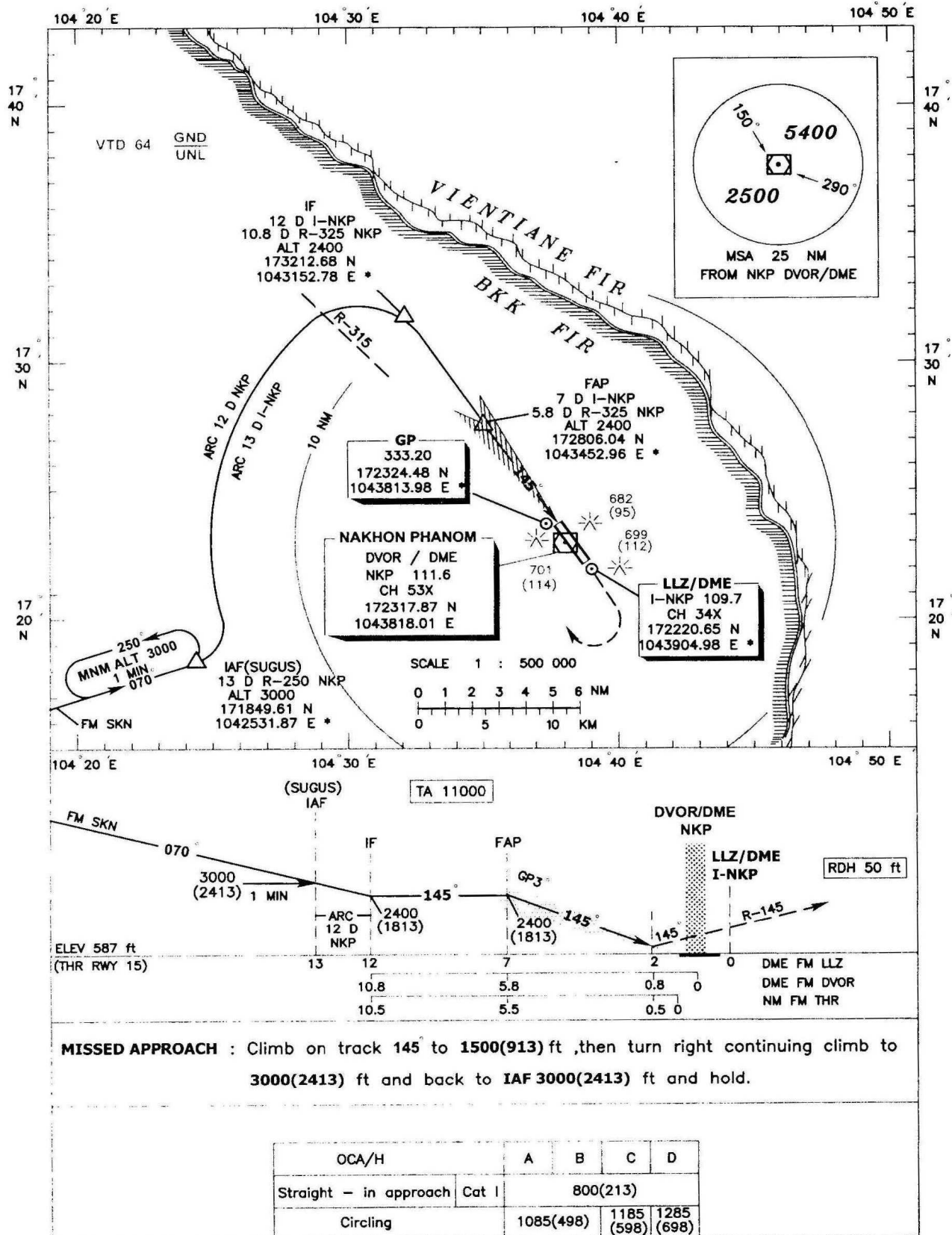
INSTRUMENT AERODROME ELEV 587 ft

APPROACH HEIGHTS RELATED TO
CHART - ICAO AERODROME ELEV

APP 123.35 ,284.0
TWR 122.5

NAKHON PHANOM /Nakhon Phanom

ILS/DME
RWY 15



THIS PAGE INTENTIONALLY LEFT BLANK



THIS PAGE INTENTIONALLY LEFT BLANK