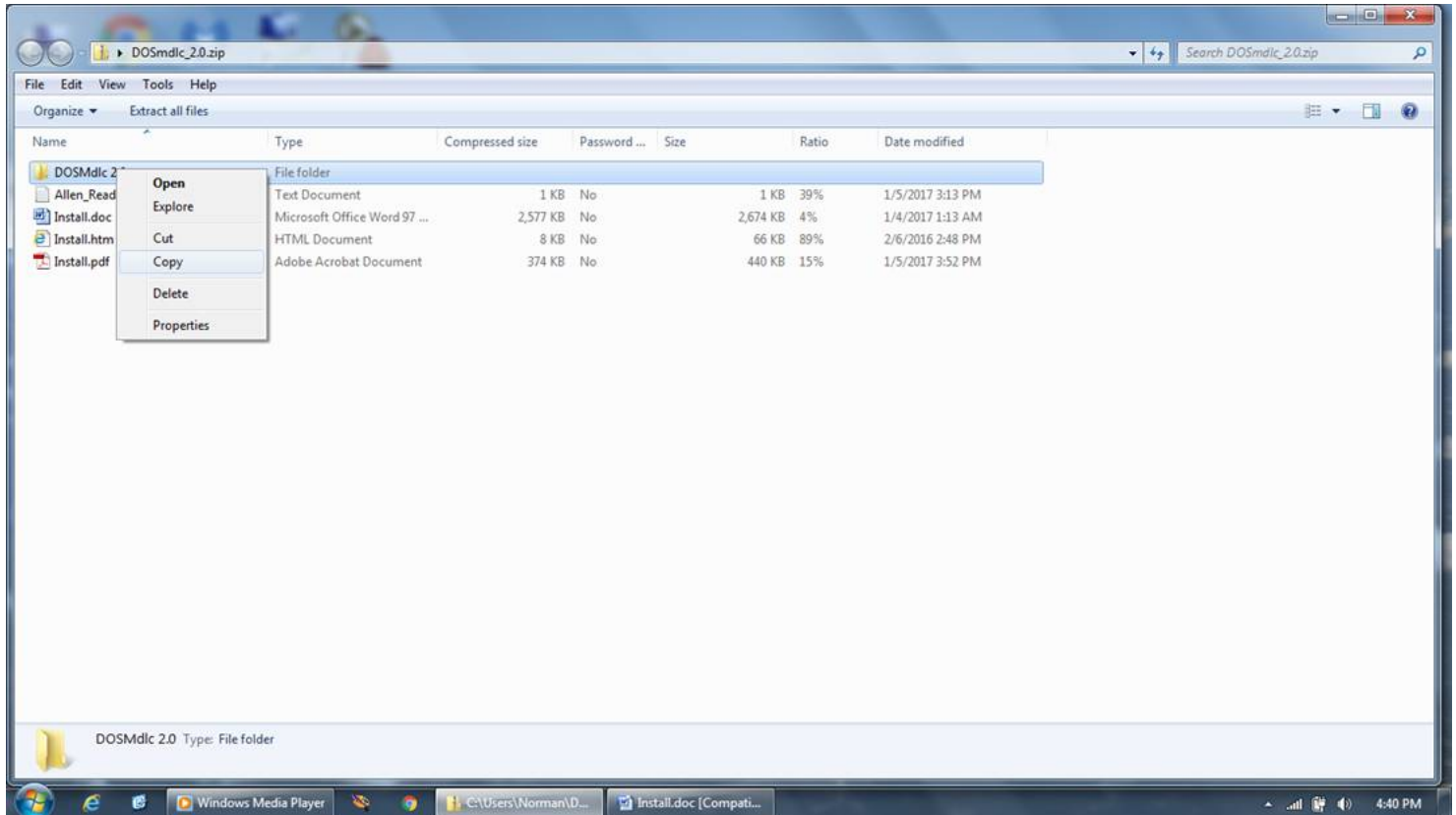
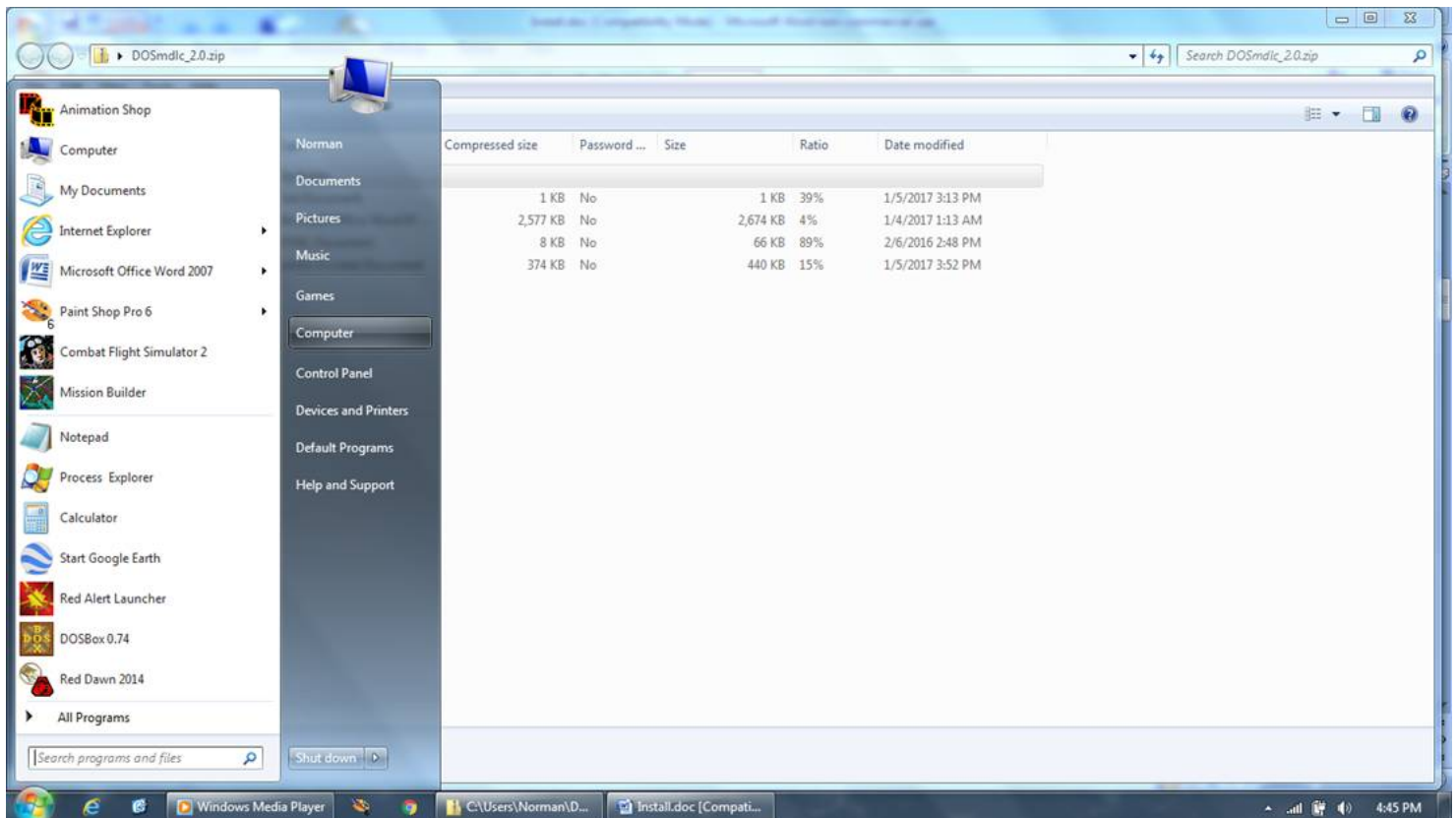


Installing DOSmdlc.

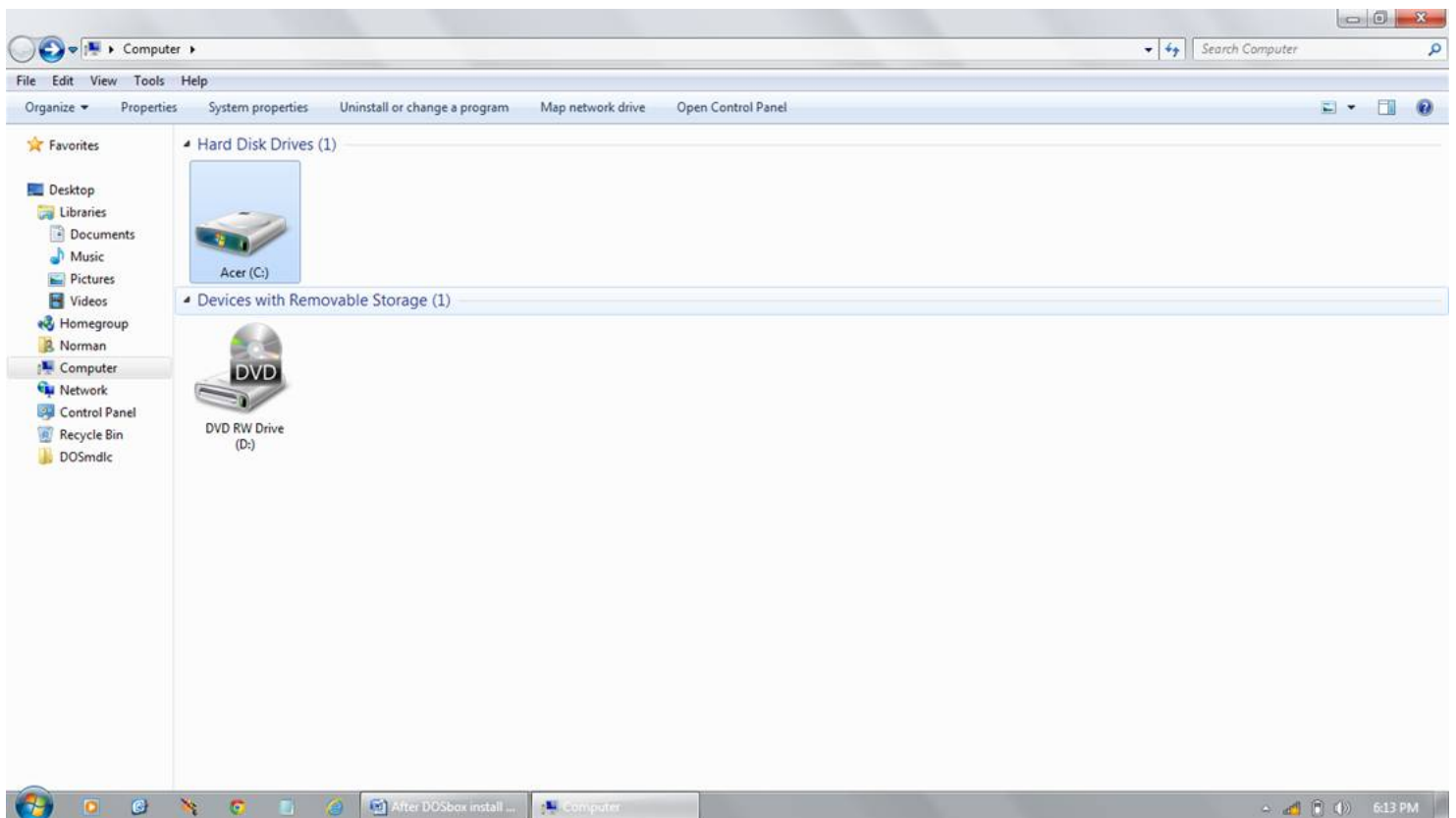
The first thing you need to do is copy the DOSMdlc 2.0 folder



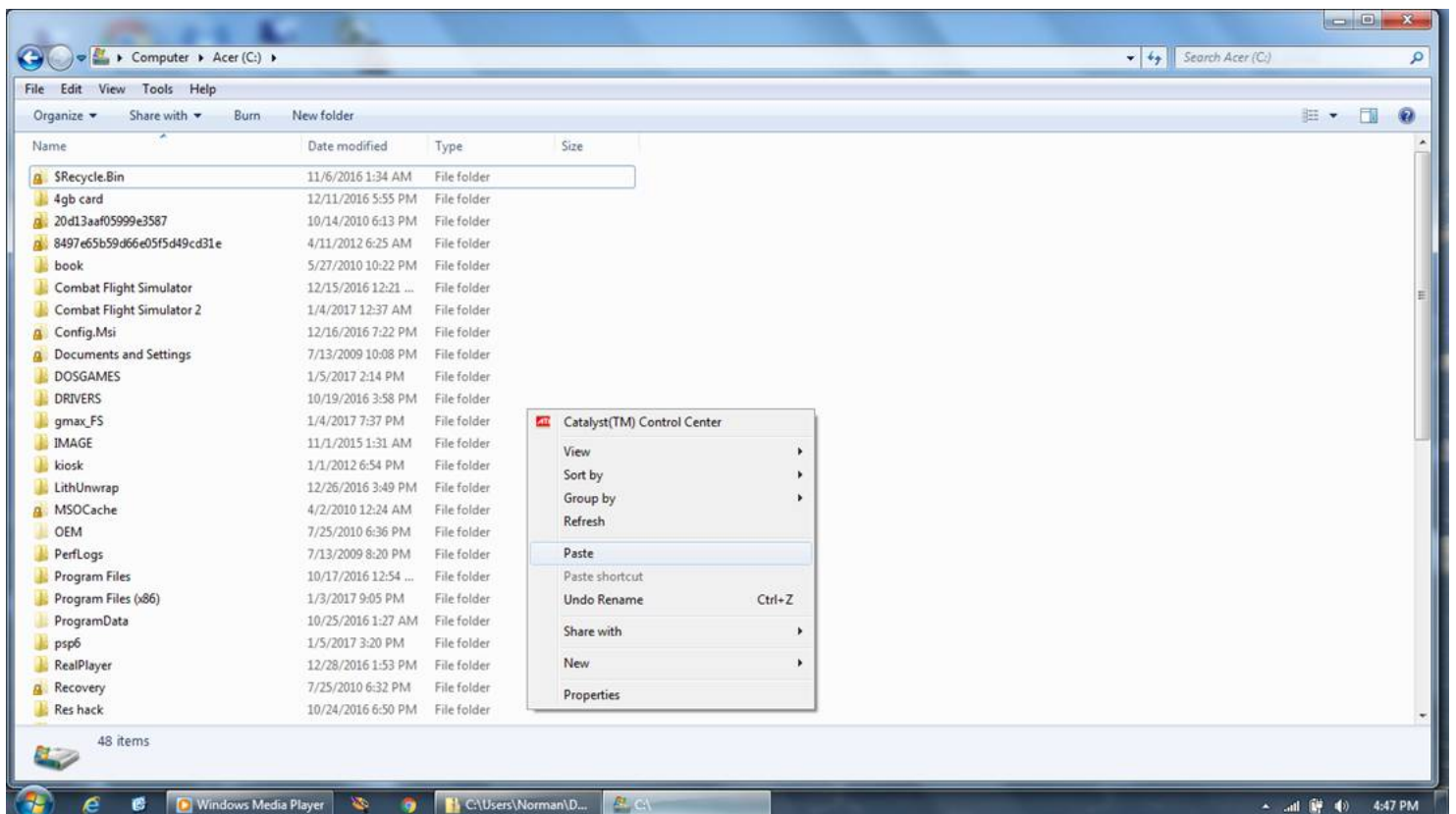
First go to Computer. You may also have a desktop shortcut. This could be named My Computer, Computer or This PC.

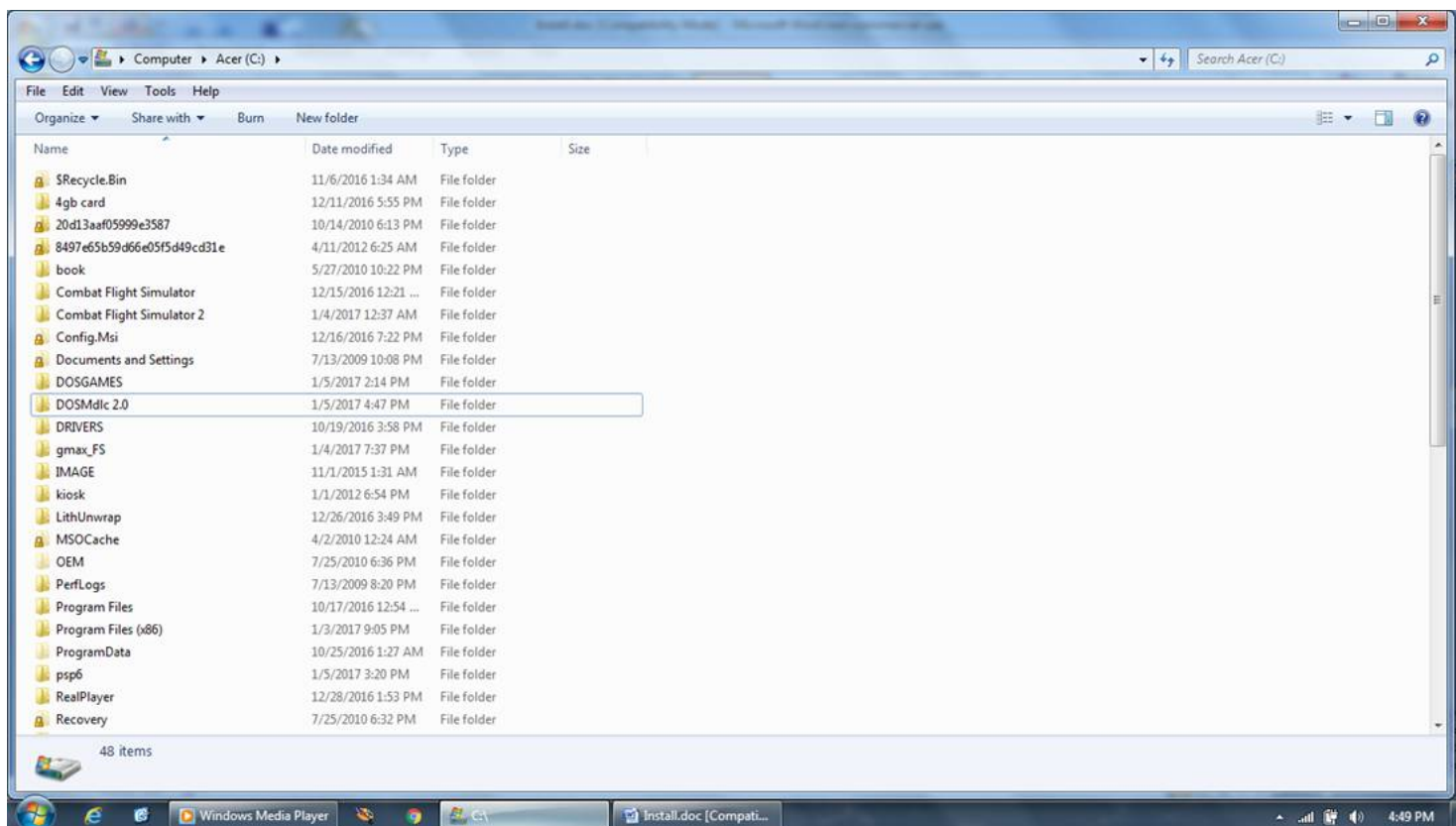


At this window it will show all drives of all kind (Hard Drive, CD Drive and Flash Drive) active on your computer. Double click on C: drive.

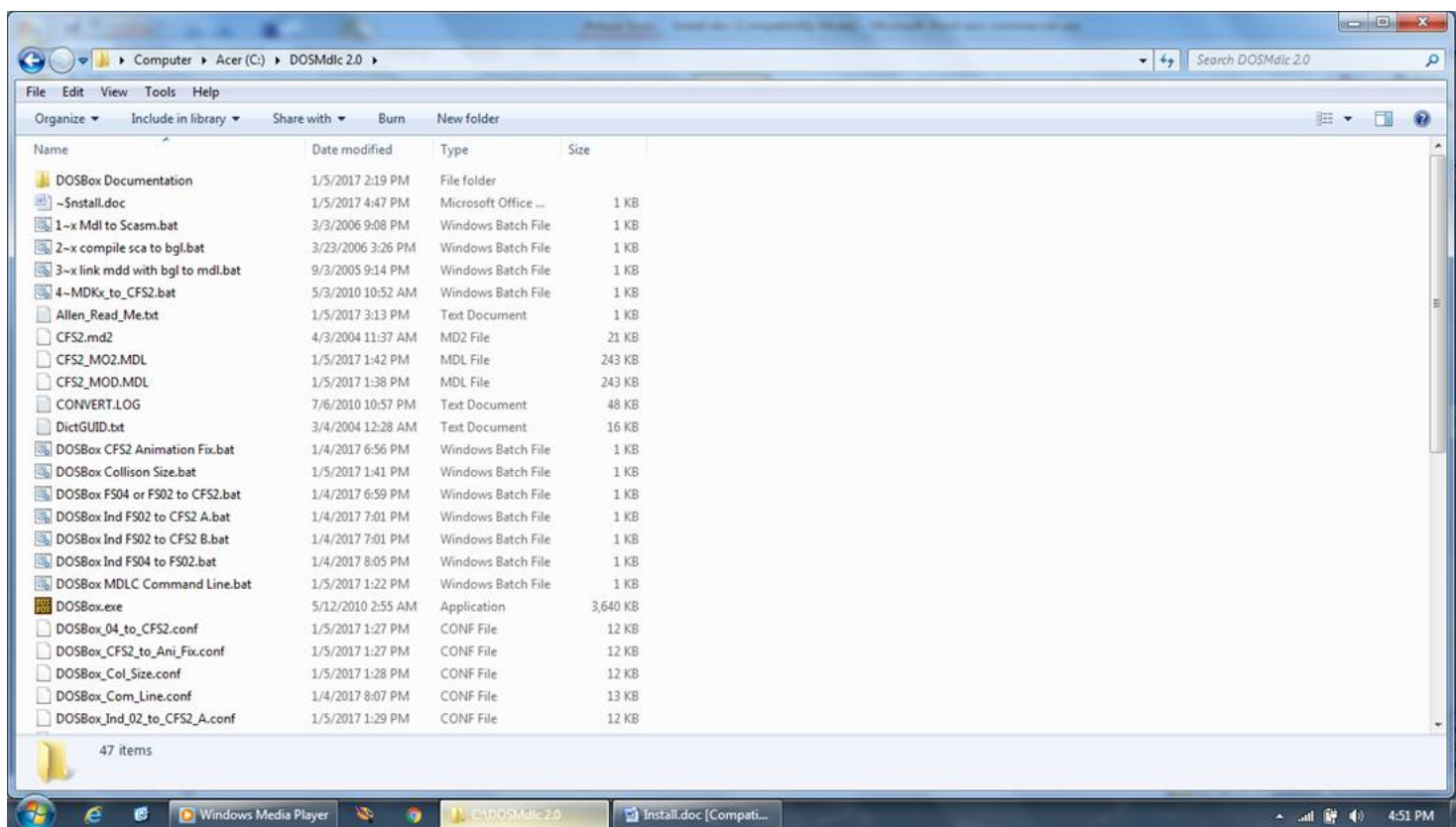


In the C drive right click and Paste the DOSMdlc 2.0 Folder

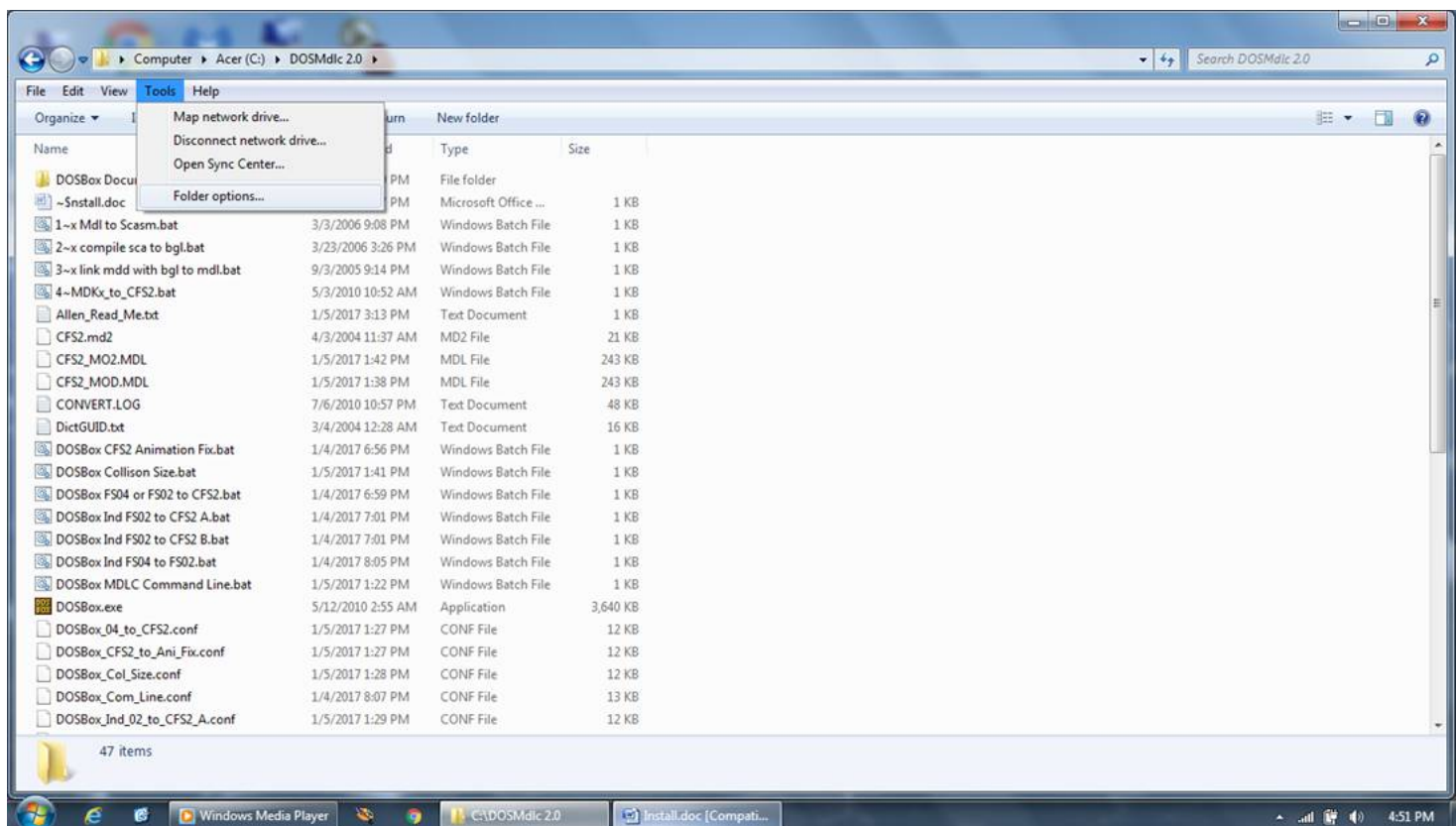




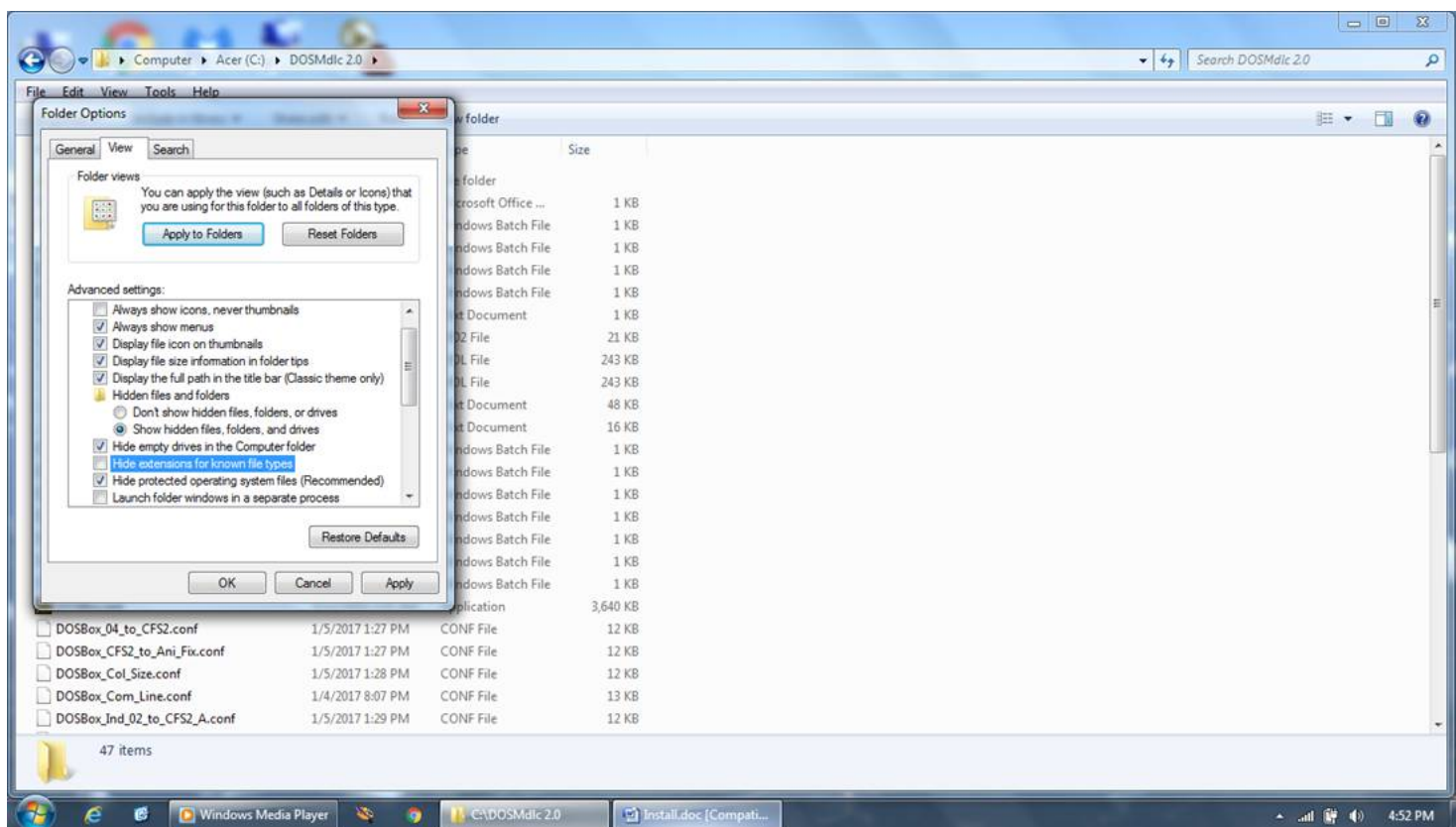
Now that the DOSMdlc 2.0 folder has been pasted go double click on it to go into the DOSMdlc 2.0 folder.



Now we are going to un-hide extensions for known file types. Do this by going to Tools than Folder Options...

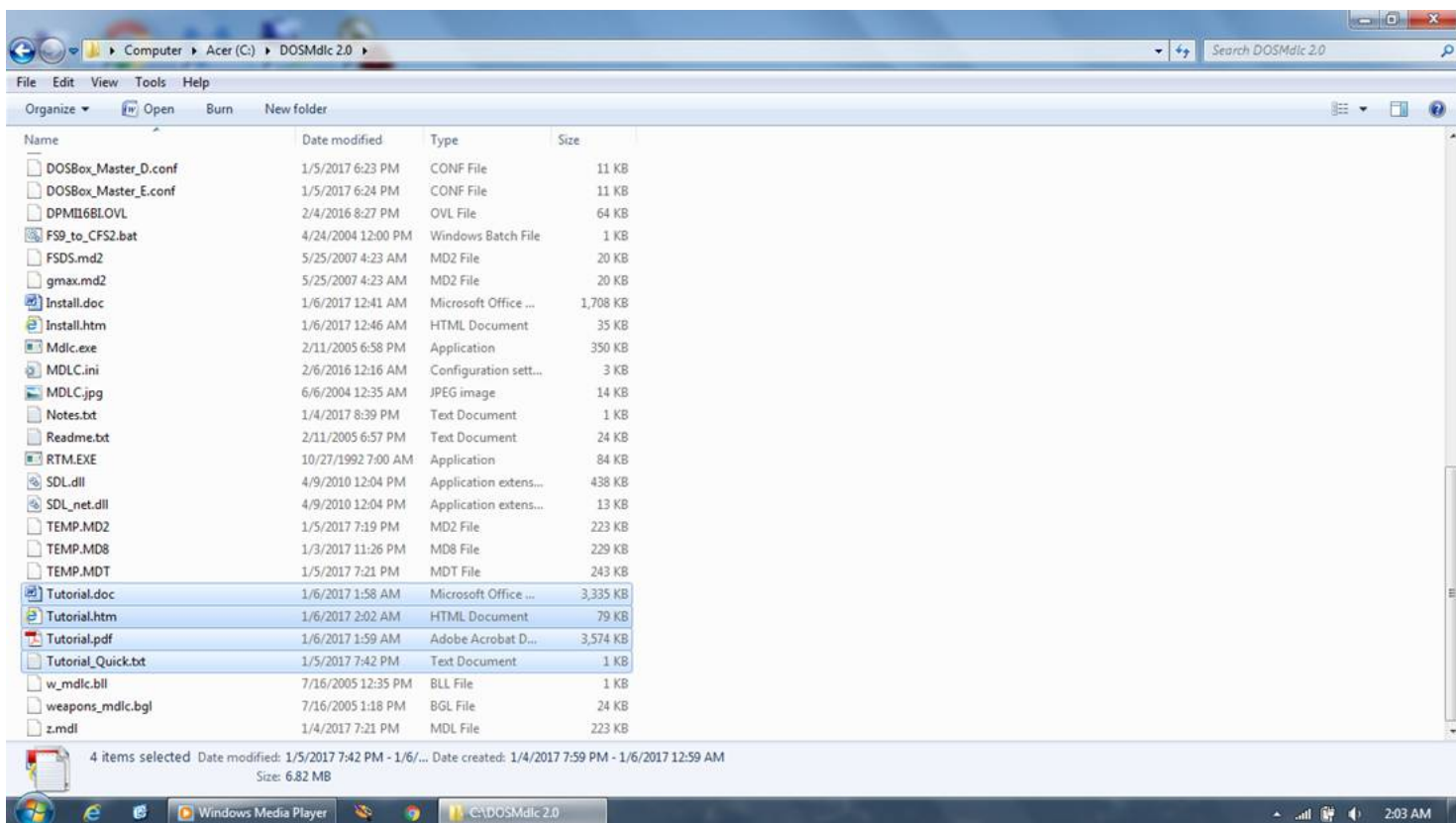


Now in then Folder Option **un-check Hide extensions for known file types**. Now hit Apply and close the Folder Option



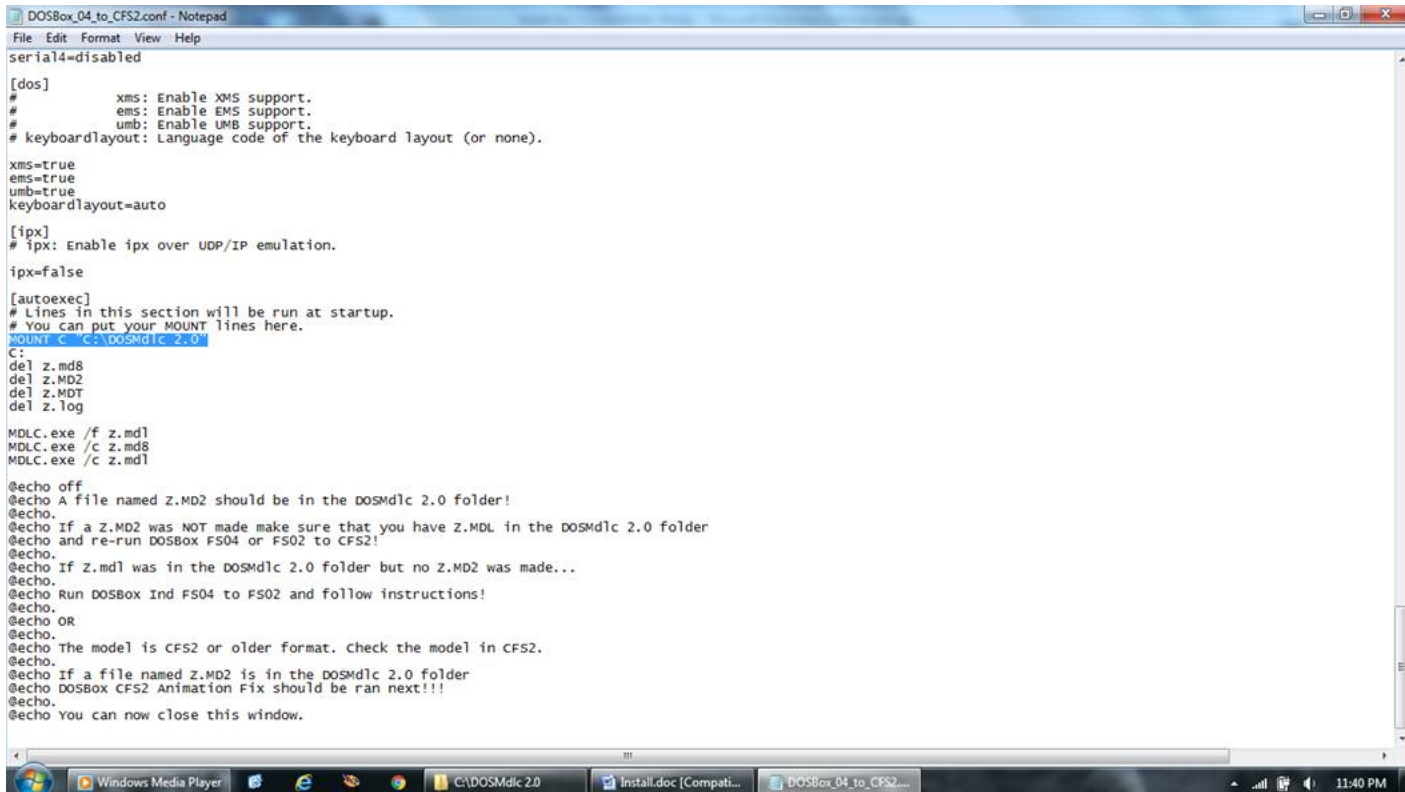
The un-hiding extensions for known file types is needed for later as you will need to change file extensions. File extensions are the 2, 3 or some 4 letters and/or number as the end of a file after the "." File extensions you will likely know are .air, .cfg, .dp and .mdl.

With that now **Tutorial** or **Quick_Tutorial** file will walk you through how to convert a model Good luck!

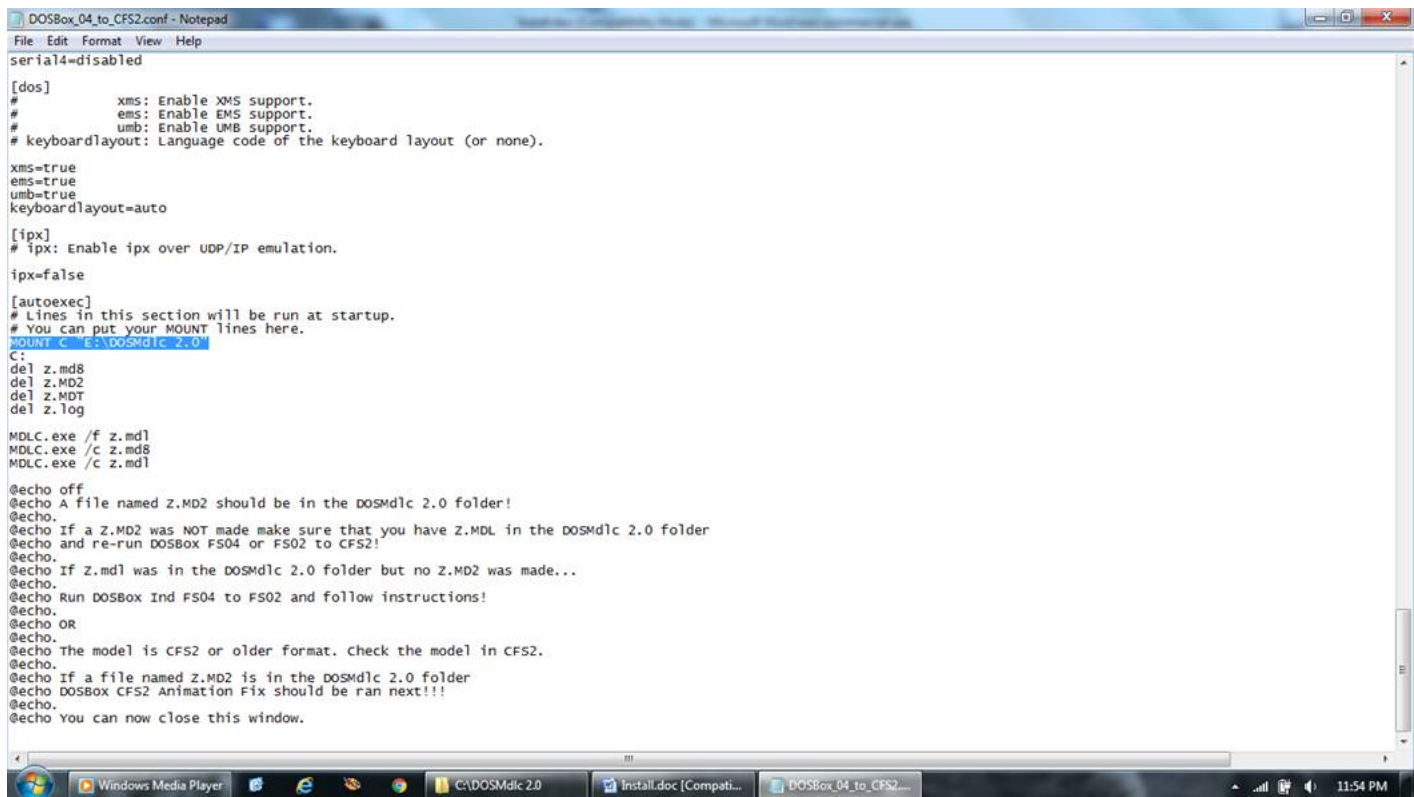


Installing On Other Drives.

If you want to run DOSMdlc 2.0 from another drive install like above but to that drive. Now you will need to edit every .conf file. You can open them with Notepad/Wordpad. At the very end of the .conf file is "C:\DOSMdlc 2.0".



Change "C:\DOSMdlc 2.0" to the letter of the drive you want to run from Example to "E:\DOSMdlc 2.0" and save the file. Repeat for all .conf files!



```

DOSBox_04_to_CFS2.conf - Notepad
File Edit Format View Help
serial4=disabled

[dos]
#       xms: Enable XMS support.
#       ems: Enable EMS support.
#       umb: Enable UMB support.
# keyboardlayout: Language code of the keyboard layout (or none).

xms=true
ems=true
umb=true
keyboardlayout=auto

[ipx]
# ipx: Enable ipx over UDP/IP emulation.

ipx=false

[autoexec]
# Lines in this section will be run at startup.
# You can put your MOUNT lines here.
MOUNT C: E:\DOSMdlc 2.0
C:
del z.md8
del z.MD2
del z.MDf
del z.log

MDLC.exe /f z.md1
MDLC.exe /c z.md8
MDLC.exe /c z.md1

@echo off
@echo A file named z.MD2 should be in the DOSMdlc 2.0 folder!
@echo.
@echo If a z.MD2 was NOT made make sure that you have z.MDL in the DOSMdlc 2.0 folder
@echo and re-run DOSBox FS04 or FS02 to CFS2!
@echo.
@echo If z.md1 was in the DOSMdlc 2.0 folder but no z.MD2 was made...
@echo.
@echo Run DOSBox Ind FS04 to FS02 and follow instructions!
@echo.
@echo OR
@echo.
@echo The model is CFS2 or older format. Check the model in CFS2.
@echo.
@echo If a file named z.MD2 is in the DOSMdlc 2.0 folder
@echo DOSBox CFS2 Animation Fix should be ran next!!!
@echo.
@echo You can now close this window.
  
```

List of .conf to be edited

DOSBox_Shine.conf
 DOSBox_Master_A.conf
 DOSBox_Master_B.conf
 DOSBox_Master_C.conf
 DOSBox_Master_D.conf
 DOSBox_Master_E.conf
 DOSBox_Com_Line.conf
 DOSBox_Col_Size.conf
 DOSBox_CFS2_to_Ani_Fix.conf
 DOSBox_04_to_CFS2.conf

Per DosBox Instructions/warning:

Mounting your entire C drive with MOUNT C C:\ is NOT recommended! The same is true for mounting the root of any other drive, except for CD-ROMs (due to their read-only nature).

Otherwise if you or DOSBox make a mistake you may lose all your files.

Also never mount a "Windows" or "Program Files" folders or their subfolders in Windows Vista/7 as DOSBox may not work correctly, or will stop working correctly later. It is recommended to keep all your dos applications/games in a simple folder (for example c:\dosgames) and mount that.